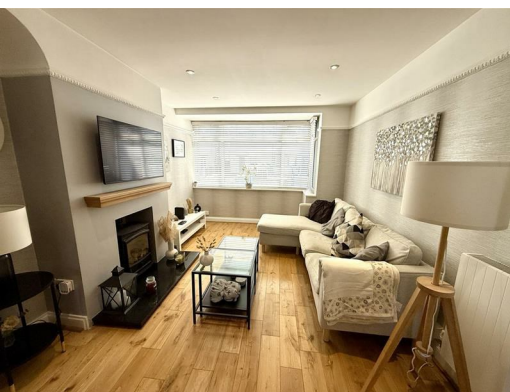




**1 Moss Side, Knotty Ash, Liverpool, Merseyside, L14 0JS**

**Offers around £215,000**

Alpha-move are delighted to offer this super three bedroom extended semi on Moss side L14, close to schools, major transport links, local parks and amenities. The property briefly comprises of porch, hallway, front sitting room, rear dining room and fully fitted galley kitchen with intergrated appliances. Externally the property has off street parking at the front with a landscaped rear patio, shrubbery and storage-shed. This property is in turn-key condition and would be ideal for first time buyers and young families. Early viewing is strongly recommended.



# 1 Moss Side, Knotty Ash, Liverpool, Merseyside, L14 0JS

## Entrance Porch

6'8" x 5'1" (2.055 x 1.55)

Composite door, upvc to front aspect.

## Entrance Hall

14'7" x 5'5" (4.46 x 1.67)

Meter cupboard, upvc window to side aspect, composite door.

## Reception Room

12'10" x 10'5" (3.93 x 3.18)

Gas fire, double radiator, upvc window to front aspect.

## Reception Room Two

10'5" x 11'1" (3.19 x 3.38)

Double radiator, upvc french doors to rear aspect.

## Kitchen

14'5" x 5'11" (4.41 x 1.82)

Kitchen comprises of various wall and base units, quartz worktops, fridge and freezer, wine cooler, oven, hob, extractor fan, microwave, upvc to rear and side aspect.

## Bedroom One

13'6" x 10'10" (4.14 x 3.31 )

Double radiator, upvc window to front aspect.

## Bedroom Two

12'5" x 11'3" (3.81 x 3.45)

Double radiator, upvc window to rear aspect.

## Bedroom Three

13'0" x 6'7" (3.97 x 2.01)

Single radiator, upvc window to rear aspect.

## Bathroom

8'2" x 5'5" (2.49 x 1.67)

P shaped bath with shower over, low level wc, wash hand basin, chrome towel rail, upvc window to front aspect.

